



<div>Vendor</div> <div></div>	<div>ABT 360 KT/Y PP PLANT Project</div>		<div>Owner</div> <div><div>سراج گستران رجا SERAJ GOSTARAN REJAL (سهامی خاص)</div></div>
	<div>General Arrangement Drawing (incl foundation load details)</div>		
	<div>Vendor's Doc. No.: 2 3 2 4 9 - 0 4 A</div>	<div>Rev.: 00</div>	
	<div>PPEC Doc. No.: L03-RE037-ME-GAD-001</div>		

PPEC REQ. NO. : L03-RE037-ME-GAD-001

ITEM NO. :

TOTAL PAGES : 03

**SEE RELEVANT
PAGES**

- **NO COMMENTS** : Documents/Drawings Were Checked By PPEC And Further Step Can Be Followed.
- **COMMENTED AS MARKED:** Documents/Drawings Were Checked By PPEC And Marked Comments Must Be Considered By Vendor. Vendor Shall Revise Documents/Drawing As Per Comments And The New Revision Of Documents/Drawings Must Be Revised Prior To Fabrication.
- **REJECTED:** Documents/Drawings Were Checked And It Is Not In Comply With Purchase Requisition Requirements.
- **ACCEPTABLE WITH COMMENTS:** Documents/Drawings Were Checked By PPEC And Comments Must Be Considered By Vendor. Fabrication Can Proceed Accordingly. Revised Document To Be Issued Either For Review Or As Final Certified. However PPEC Will Check The Revised Document For Proper Incorporation Of Comments.
- **NOT RETURNED:** Document Was Received For Information And Not Returned To The Vendor.



Name :
Signature:
Date :

Req. No. :

Seq. No.:

PPEC review & comments does not absolve the vendor of the responsibility for the corrected design, manufacturing and operation of the equipment

00	28-04-2025	Issue for Engineering	F.T.	S.K.	J.J.	
REV.	DATE	Description	Prepared by	Checked by	Approved by	Authorized by

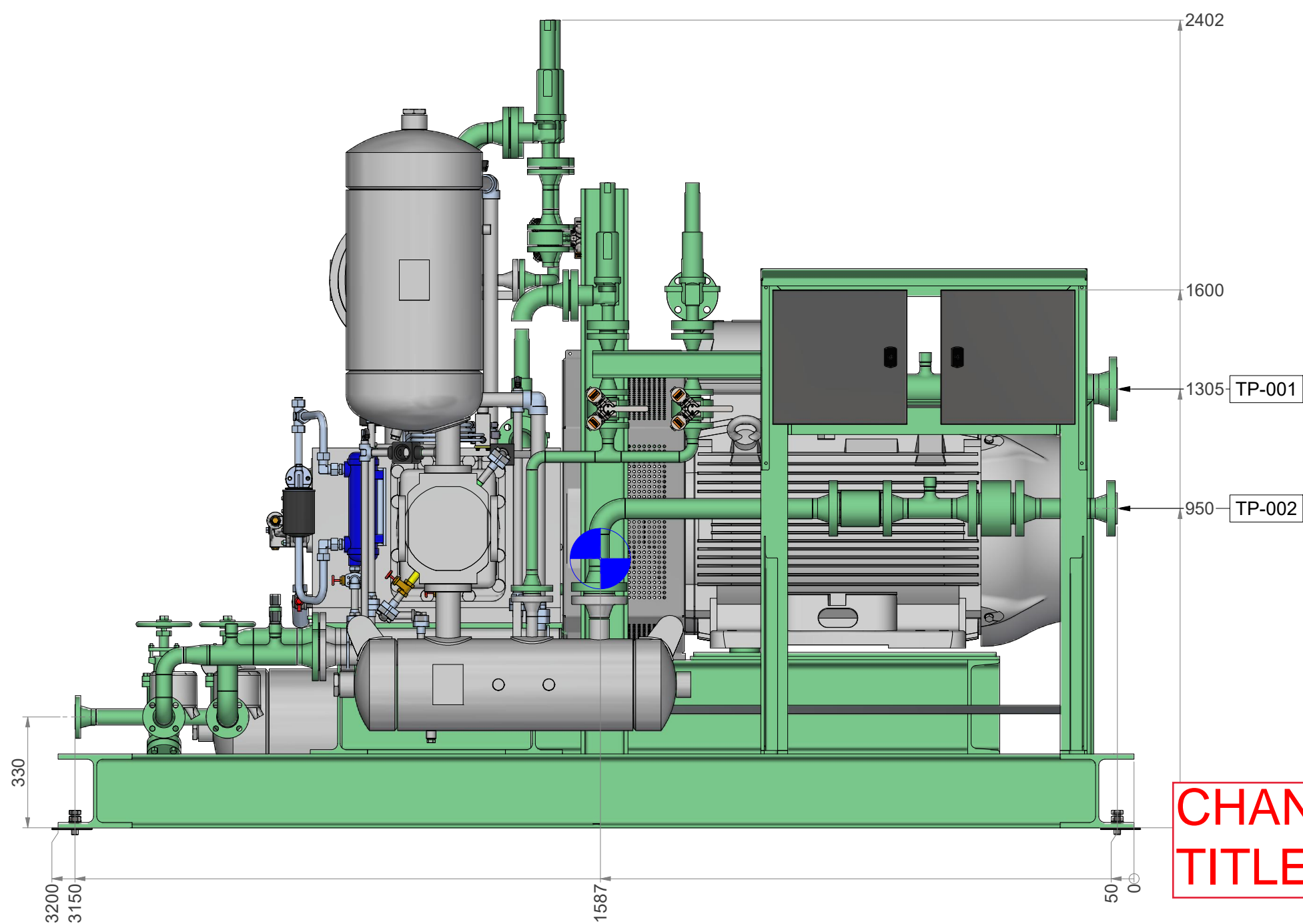
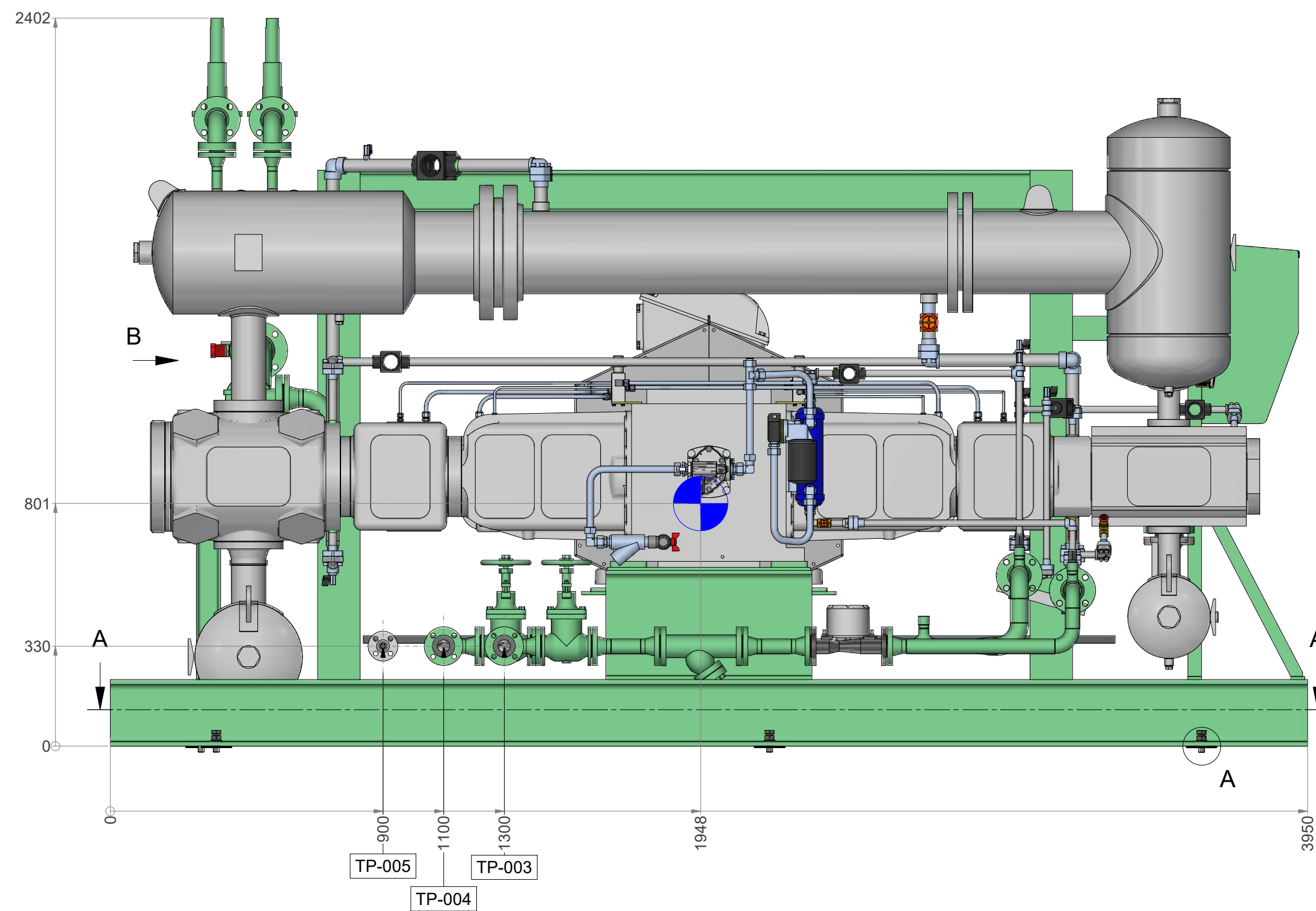
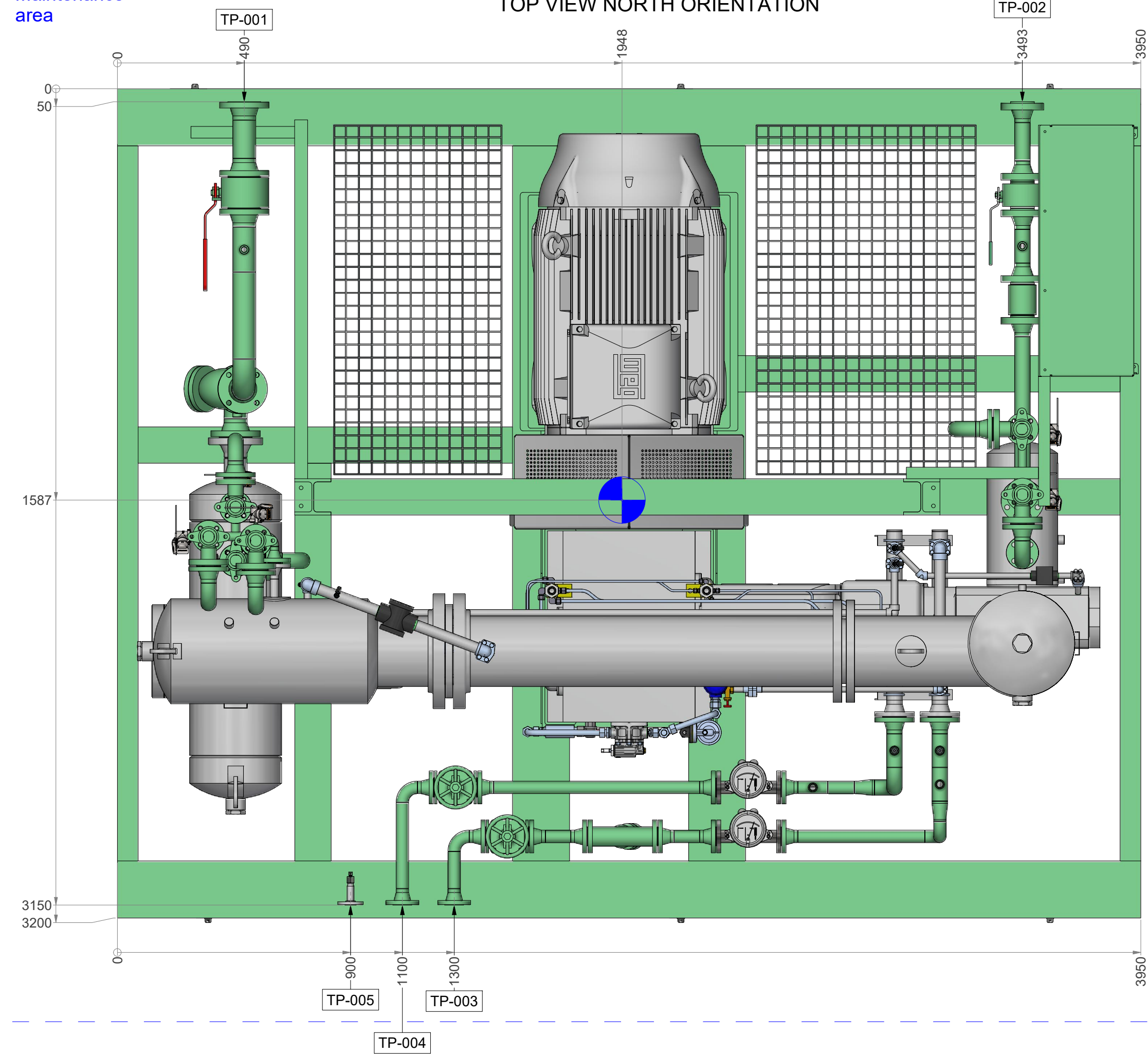
Vendor	ABT 360 KT/Y PP PLANT		Contractor (DEC)	Owner
	General Arrangement Drawing (incl foundation load details)			
	Vendor's Doc. No.: 2 3 2 4 9 - 0 4 A	Rev.: 00		
PPEC Doc. No.: L03-RE037-ME-GAD-001				
			 سراج گستران رچال SERAJ GOSTARAN REJAL (سهامی خاص)	

PAGE NO.		CHANGE INDEX DURING FORMAL ISSUE						REASON OF LATEST CHANGE
		FIRST ISSUE	SECOND ISSUE	THIRTH ISSUE	FOURTH ISSUE	FIFTH ISSUE	SIXTH ISSUE	
		REV.00	REV.01	REV.02	REV.03	REV.04	REV.05	
1		X						
2		X						
3		X						
4								
5								
6								
7								
8								
9								
10								
11								
12								
13								
14								
15								
16								
17								
18								
19								
20								
21								
22								
23								
24								
25								
26								
27								
28								
29								
30								
31								
32								
33								
34								
35								
36								
37								
38								
39								
40								

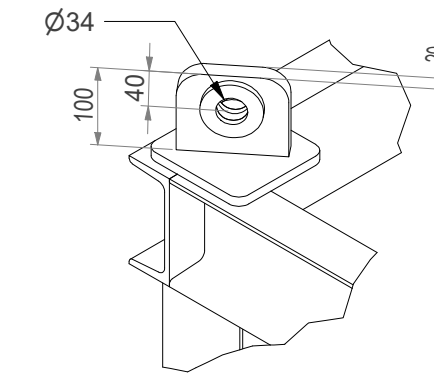


Maintenance
area

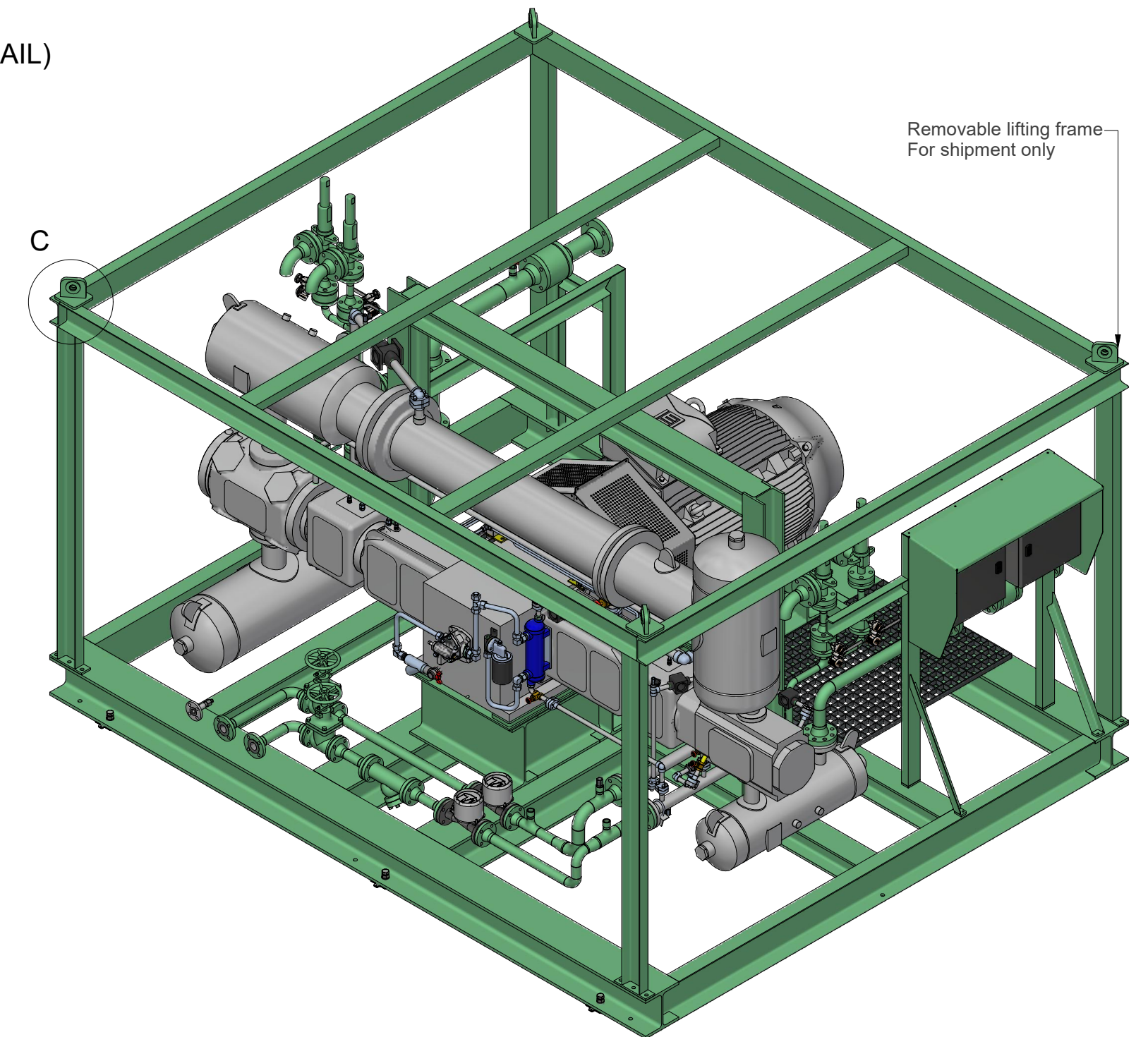
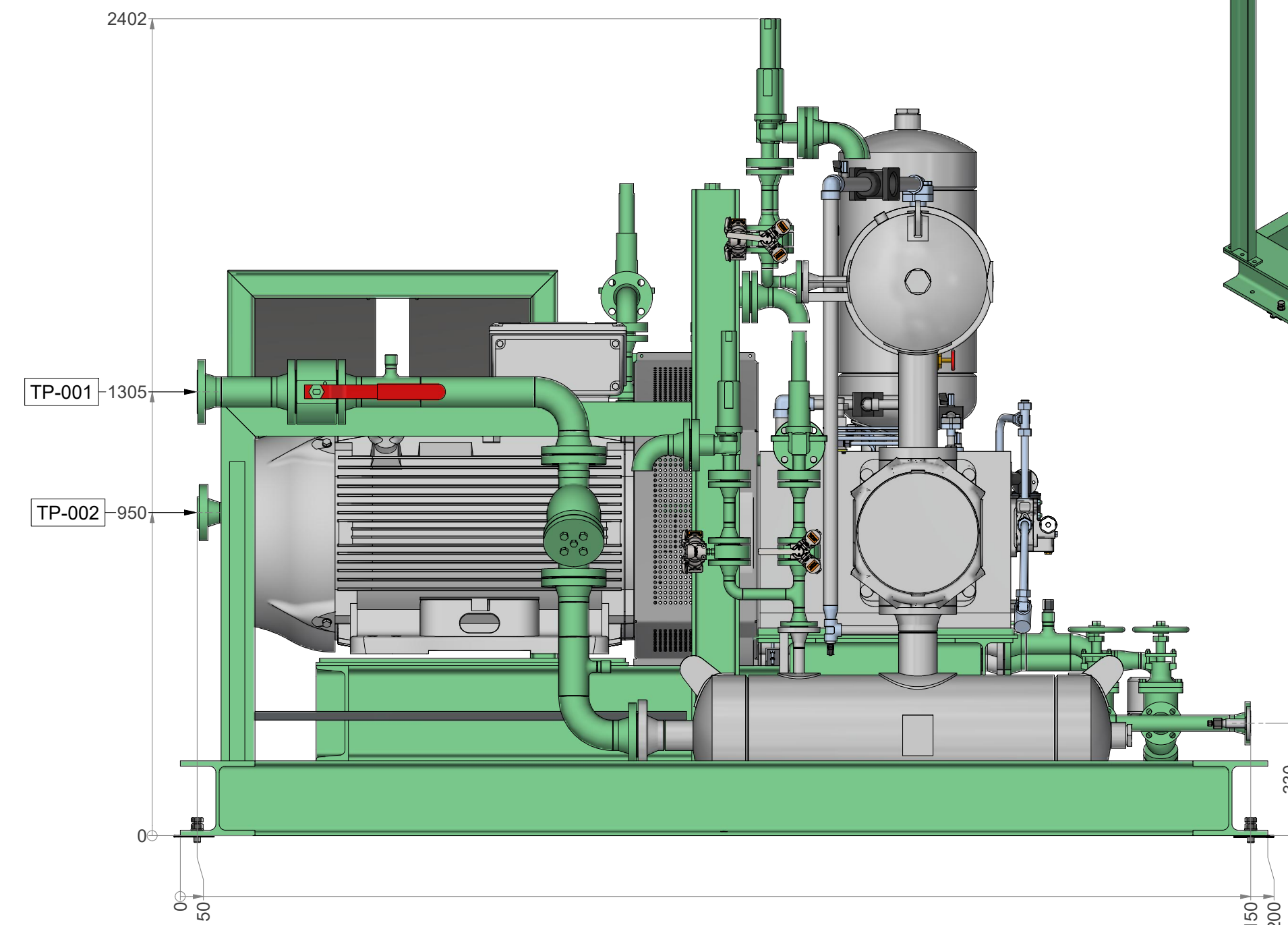
TOP VIEW NORTH ORIENTATION



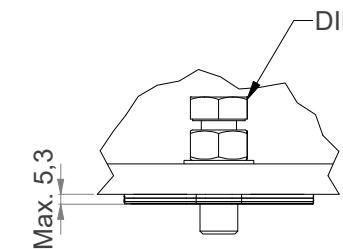
C (LIFTING LUG DETAIL)



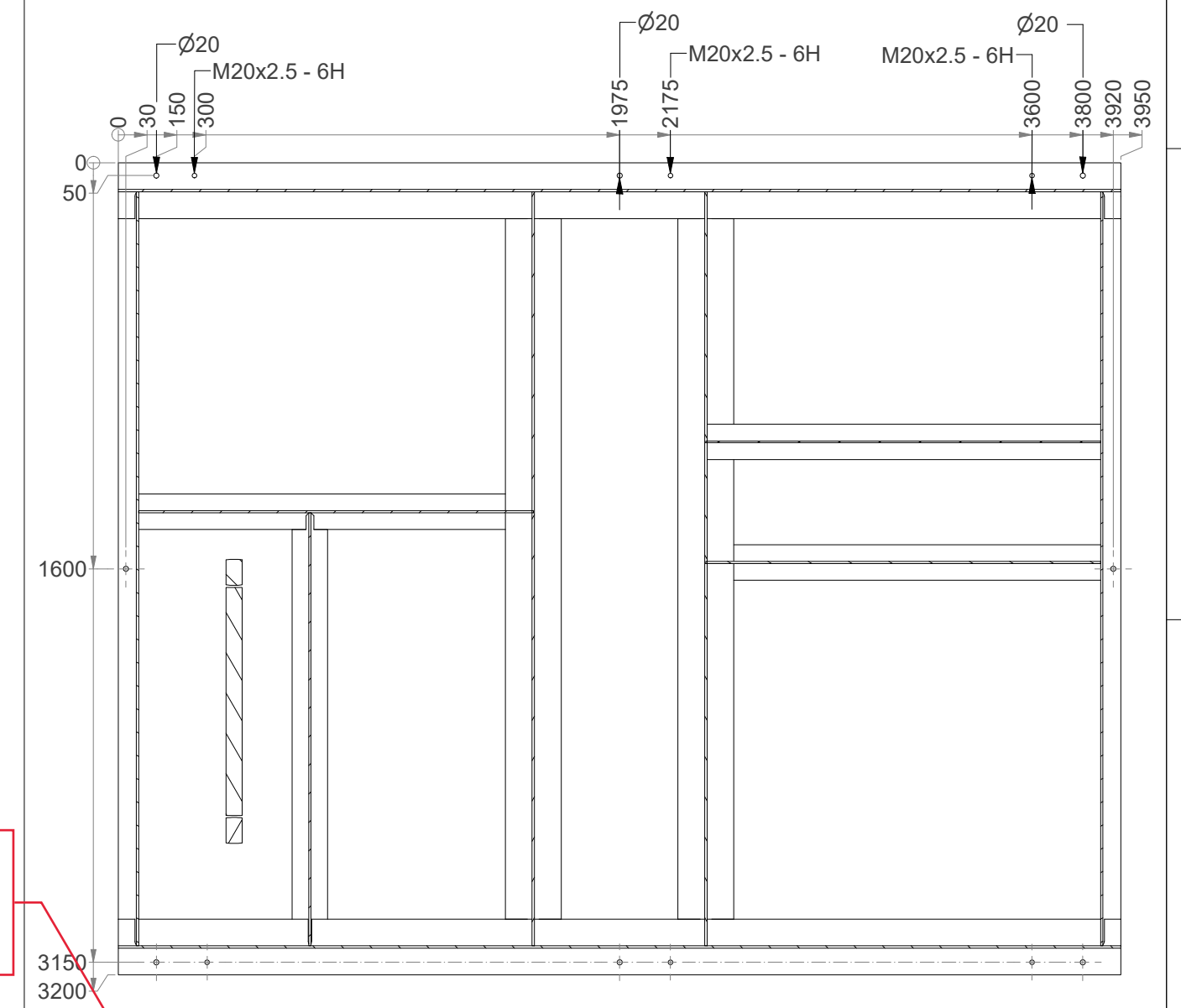
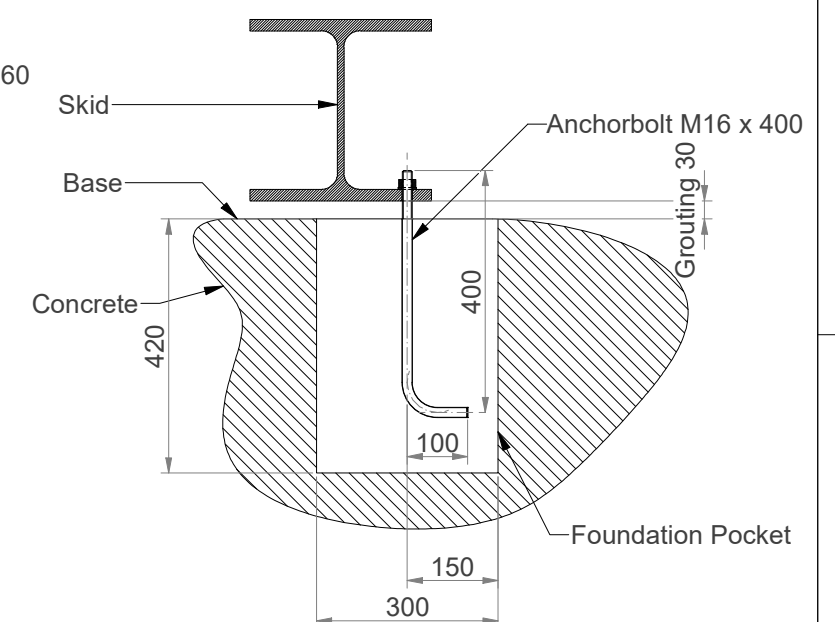
B (1 : 15)



A
(LEVELING BOLT)



A-A (FOUNDATION PLAN)

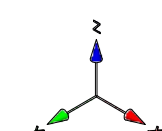


CHANGE
TITLE

MUST BE 300"
ACCORDING TO
PROJECT SPEC

NOTES/ LEGEND

• = CENTER OF GRAVITY



NOZZLE									
Tie-in Point	Nozzle	Size	Rating	Type	Mater				
INLET	TP-001	3"	150#	WNF ACC. ASME B16.5 RF	A/SA105N	2	2	2	0.9
OUTLET	TP-002	2"	600#	WNF ACC. ASME B16.5 RF	A/SA105N	1	1	1	0.3
COOLING WATER SUPPLY	TP-003	1 1/2"	150#	WNF ACC. ASME B16.5 RF	A/SA105N	1	1	1	0.3
COOLING WATER RETURN	TP-004	1 1/2"	150#	WNF ACC. ASME B16.5 RF	A/SA105N	1	1	1	0.3
Instrument air inlet	TP-005	3/4"	150#	WNF ACC. ASME B16.5 RF	A/SA316L	0.5	0.5	0.5	0.15

MODIFICATIONS				REVISIONS			
REV.	DATE	DRAWN	ACC.	REV.	DATE	DRAWN	ACC.
0	28-4-2025	FVT		1	28-4-2025	FVT	

Project: Seraj Gostaran Rejal
ABT 360 KT/Y PP PLANT Project
L03-RE037-ME-GAD-001

Projection: First Angle

This drawing is owned by Airpack and shall not be printed or copied in any other way than with Airpack's PERMISSION

Checked by: [Signature]
Scale: [Blank]
Airpack Ref: 23249-COM
Drawing No: 23249-04 GAD

Sheet 1 of 1